

Boston Spa Parish Council

Monthly Bulletin

January 2012

For more details about the work of the Parish Council please go to the website where you can find minutes from Parish Council meetings and lots of useful information about the village of Boston Spa.

Neighbourhood Plan



The steering group for the neighbourhood plan is meeting soon. We have a few members of the public who are helping but we would like more if possible. Please consult the Parish Council website for more details. This legislation from the localism bill may have a huge impact on the plans for building and the organization of Boston Spa, please contact the Clerk if you would like to be involved.

Street Lighting

Leeds City Council's Executive Board is meeting in early February when it is hoped that formal approval will be given to the street lighting scheme for High Street. If that is given it is hoped that the work to replace all the lights will start in the spring.



Youth Club



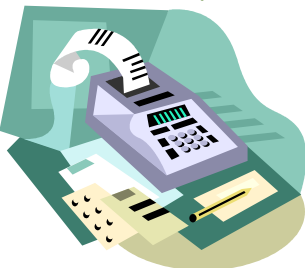
The newly formed Boston Spa youth club is operating every Tuesday night from 6.30—8.30pm at the Deepdale Children's Centre and is proving very successful. The organizers are hoping to increase the days that they open. The Parish Council is very grateful for all the work done for the young people in the village

Queen's Diamond Jubilee

The working party organizing the Diamond Jubilee celebrations are making great progress. There will be events at the village hall and a village party at the riverside with fireworks, bands and food. The Parish Council has increased the precept for this year to fund the events, in line with other Parish Councils throughout the country. Many other organisations such as Boston In Bloom and the Gala committee are hoping to mark the celebration during this Jubilee Year. Please see the Parish Council website for more details



Parish Precept



The Parish Precept has been increased a little this year to include costs for the Queen's Jubilee celebrations and for the production of a neighbourhood plan. By careful budgeting and by raiding the reserves the amount of extra money needed for these projects has been contained as far as possible and it is hoped that the increase will be one year only and that the precept will return to previous levels for the following year.

Church Fields Housing Development



The developers are hoping to begin building in the late Spring although there are a number of planning issues to be resolved before this can happen. A community liaison group has been set up to discuss and manage the impact of the project on the local community. Current plans for alterations to the high-way outside the development and the creation and management of the green space are currently being focussed upon before the work begins.

Damage to Jackdaw Crag



The damage to the underside of the cliff face at Jackdaw crag has been painstakingly disguised by a group of volunteers. The Parish Council has still not received any apology for the damage done to this historic site.

Pedestrian Crossing at Children's Centre

Sadly our second attempt to get a proper crossing at the Deepdale Children's Centre and play area has been refused. The survey carried out by Leeds City Council showed considerably lower traffic and pedestrian flows along and across High Street than are required to justify such a crossing.



Farmers' Market



The popular monthly Farmer's Market still operates on the second Friday of every month. There is still the opportunity to run a charity stall to raise money for your local organisation should you wish to do so. Please contact the clerk for more details.

This newsletter has been produced in response to feedback about information regarding the work of the Parish Council. The minutes of each Parish Council meeting are agreed as an accurate record at each subsequent meeting and will appear on the website and the information boards after these meetings.

www.bostonpapc.org.uk

E mail for parish clerk: - bostonpapc@btinternet.com

The Parish Council Office, Village Hall, 199 High Street, Boston Spa Wetherby LS23 6AA